

## BEST CHOICE FOR MW-LEVEL PROJECTS



## MANAGEMENT SYSTEM

**ISO 9001:** Quality management system

**ISO 14001:** Standard for environmental management system

**OHSAS 18001:** International standard for occupational health and safety assessment system

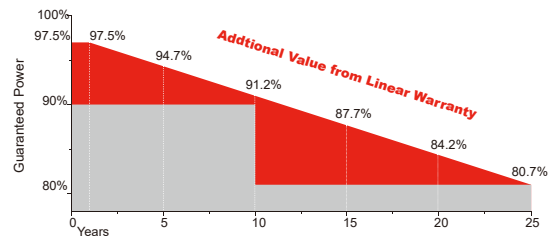
## PRODUCT CERTIFICATES



## INSURANCE



## WARRANTY



**10 YEARS**

Guarantee on product material and workmanship

**25 YEARS**

linear power output warranty

## Safety



Safety for salt mist corrosion (IEC61701, tested in TÜV SÜD)



Safety for ammonia corrosion (IEC62716, tested in TÜV SÜD)



Safety for fire risk (Class C, tested in TÜV SÜD and Rheinland)

## Reliability



PID free products, passing TÜV SÜD system voltage durability test



World 1st company to pass "Thresher Test" and "On-site Power Measurement Validation" certificate



Bankable products

## Performance



Lower series resistance brings great power efficiency improvement

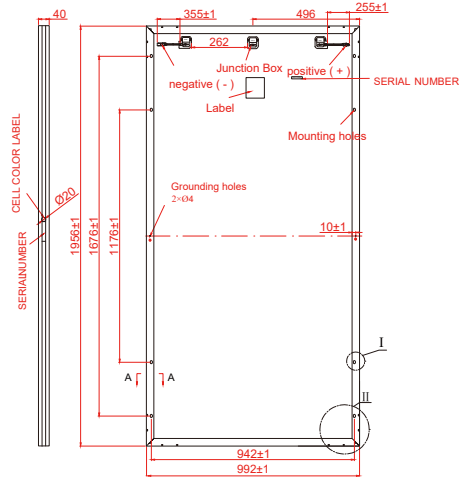
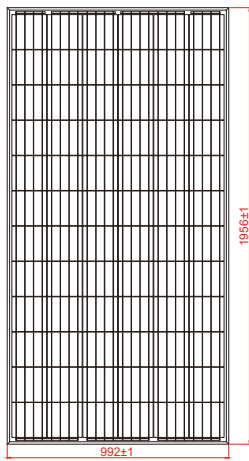


Triple 100% Electroluminescence (EL) tests minimize breakage rate

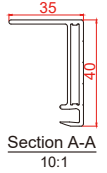
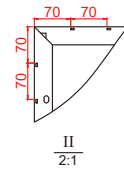
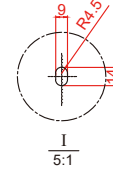


3-WAY design saves the BoS cost, the installation cost and time

# EzBOX SERIES 6 INCH 72 CELLS



\*BLACK FRAME / BLACK BACK-SHEET PRODUCTS ARE AVAILABLE UPON REQUEST.



\* All Dimensions in mm

\* The above drawing is a graphical representation of the product. For engineering quality drawings please contact SERAPHIM.

## Electrical Characteristics

Module Type	SRP-315-6PA		SRP-320-6PA		SRP-325-6PA		SRP-330-6PA	
	STC	NOCT	STC	NOCT	STC	NOCT	STC	NOCT
Maximum Power at STC - $P_{mp}$ (W)	315	233	320	236	325	240	330	244
Open Circuit Voltage - $V_{oc}$ (V)	45.3	41.9	45.5	42	45.7	42.2	45.9	42.4
Short Circuit Current - $I_{sc}$ (A)	8.87	7.17	8.96	7.24	9.03	7.30	9.12	7.37
Maximum Power Voltage - $V_{mp}$ (V)	36.8	34.4	37	34.6	37.3	34.8	37.5	35.0
Maximum Power Current - $I_{mp}$ (A)	8.56	6.77	8.65	6.83	8.72	6.89	8.80	6.98
Module Efficiency STC- $\eta_m$ (%)	16.23		16.49		16.75		17.01	
Power Tolerance (W)	(0,+4.99)							
Maximum System Voltage (V)	1000 (TÜV), 1000 (UL)							
Maximum Series Fuse Rating (A)	15							

STC: Irradiance 1000 W/m<sup>2</sup> module temperature 25°C AM=1.5 NOCT: Irradiance 800 W/m<sup>2</sup> ambient temperature 20°C wind speed :1m/s Power measurement tolerance: +/-3%

## Temperature Characteristics

Pmax Temperature Coefficient	-0.41 %/°C
Voc Temperature Coefficient	-0.32 %/°C
Isc Temperature Coefficient	+0.05 %/°C
Operating Temperature	-40~+85 °C
Nominal Operating Cell Temperature (NOCT)	45±2 °C

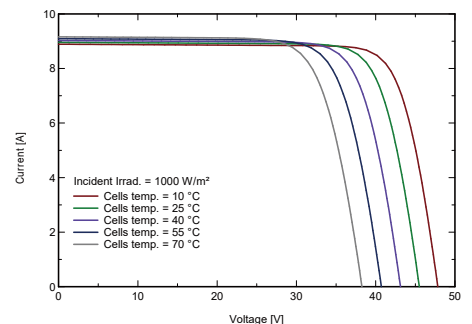
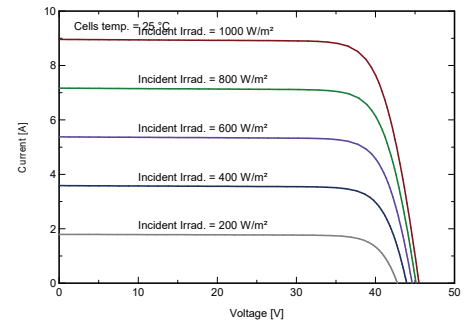
## Packing Configuration

	1956 x 992 x 40mm	
Container	20' GP	40' GP
Pieces per Pallet	26	26
Pallets per Container	10	22
Pieces per Container	260	572

## Mechanical Specifications

External Dimensions	1956 x 992 x 40 mm
Weight	23 kg
Solar Cells	Poly crystalline 156.75x156.75 mm (72pcs)
Front Glass	3.2 mm tempered glass, low iron
Frame	Anodized aluminium alloy
Junction Box	IP67
Output Cables	4.0 mm <sup>2</sup> ,cable length:900 mm
Connector	MC4 Compatible
Mechanical Load	5400 Pa

## I-V Curve (SRP-315-6PA)



Specifications are subject to change without further notification SRP-DS-EN-2017V1.0 © Copyright 2017Seraphim